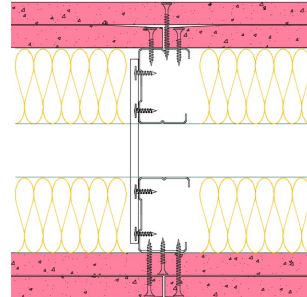


## TWC50-B-62(2x50)(200) - SPEEDLINE System Data Sheet - Version V1 (24-10-23)

Twin SPEEDLINE 50mm 'C' Stud Partition @600mm Ctrs, with 2x BG Gyproc 15mm FireLine each side, 50+50mm APR



### System Performance Breakdown

Fire Resistance:

BS476 Part 22:1987:

Test Ref & Date or Applied Ref & Report:

Max Height:

Thickness:

Duty Grade: BS 5234: Part 2:1992:

Sound Insulation:

120/120 Minutes (Integrity/Insulation).

**BTC 17442F - BRE Report P102396-1011A**

**Refer to Speedline Specification Clause**

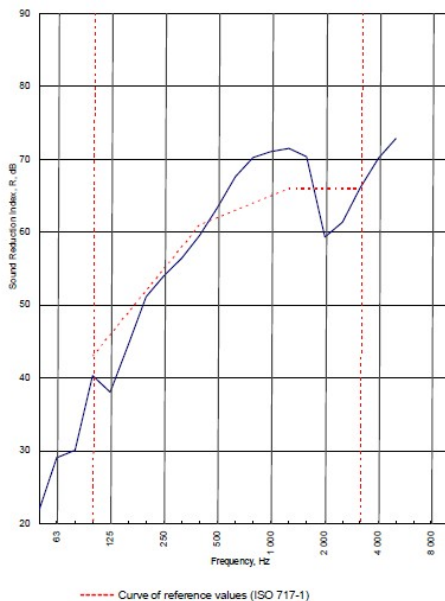
**200 mm.** (At Base Track, Excluding Finishes)

**Severe - Annexes A-F**

**62 R<sub>w</sub>dB, -8Ctr** Date Tested or Assessed Against - 29/11/2012


Test Code:  
H18043AA  
Test Date:  
29/11/2012


Freq. Hz	R dB
50	21.9
63	29.1
80	30.1
100	40.3
125	38.1
160	44.7
200	51.1
250	54.0
315	56.5
400	59.6
500	63.3
630	67.6
800	70.3
1 000	71.1
1 250	71.5
1 600	70.4
2 000	59.3
2 500	61.4
3 150	66.0
4 000	70.1
5 000	72.9
6 300	
8 000	
10 000	





Rating according to BS EN ISO 717-1:1997 **R<sub>w</sub> (C;Ctr) = 62 (-3;-8) dB**  
 Max dev. 7.9 dB at 125 Hz  
 Evaluation based on laboratory measurement results obtained by an engineering method:  
 C<sub>50-3150</sub> = -6 dB    C<sub>50-5000</sub> = -5 dB    C<sub>100-5000</sub> = -2 dB  
 C<sub>9-50-3150</sub> = -18 dB    C<sub>9-50-5000</sub> = -18 dB    C<sub>9-100-5000</sub> = -8 dB

TESTED AT ONE OF THE UKAS ACCREDITED LABORATORIES BELOW

B.T.C (H-Ref on Graph) 

B.R.E 

AIRO 

S.R.L 

Customer: Metsec plc Hepsec Division



BTC 18043A: Page 9 of 11

SPEEDLINE Drywall Systems, Adsetts House, 16 Europa View, Sheffield Business Park, Sheffield, S9 1XH.

Tel: 0114 231 8030.

Email: [enquiries@speedlinedrywall.co.uk](mailto:enquiries@speedlinedrywall.co.uk)

(As per the requirements set out in ISO/IEC 17025:2017 regarding test data the results stated have been carried out by voestalpine Metsec plc as part of the contract to supply Speedline Metal Sections to SIG Plc)